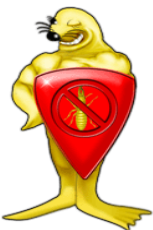
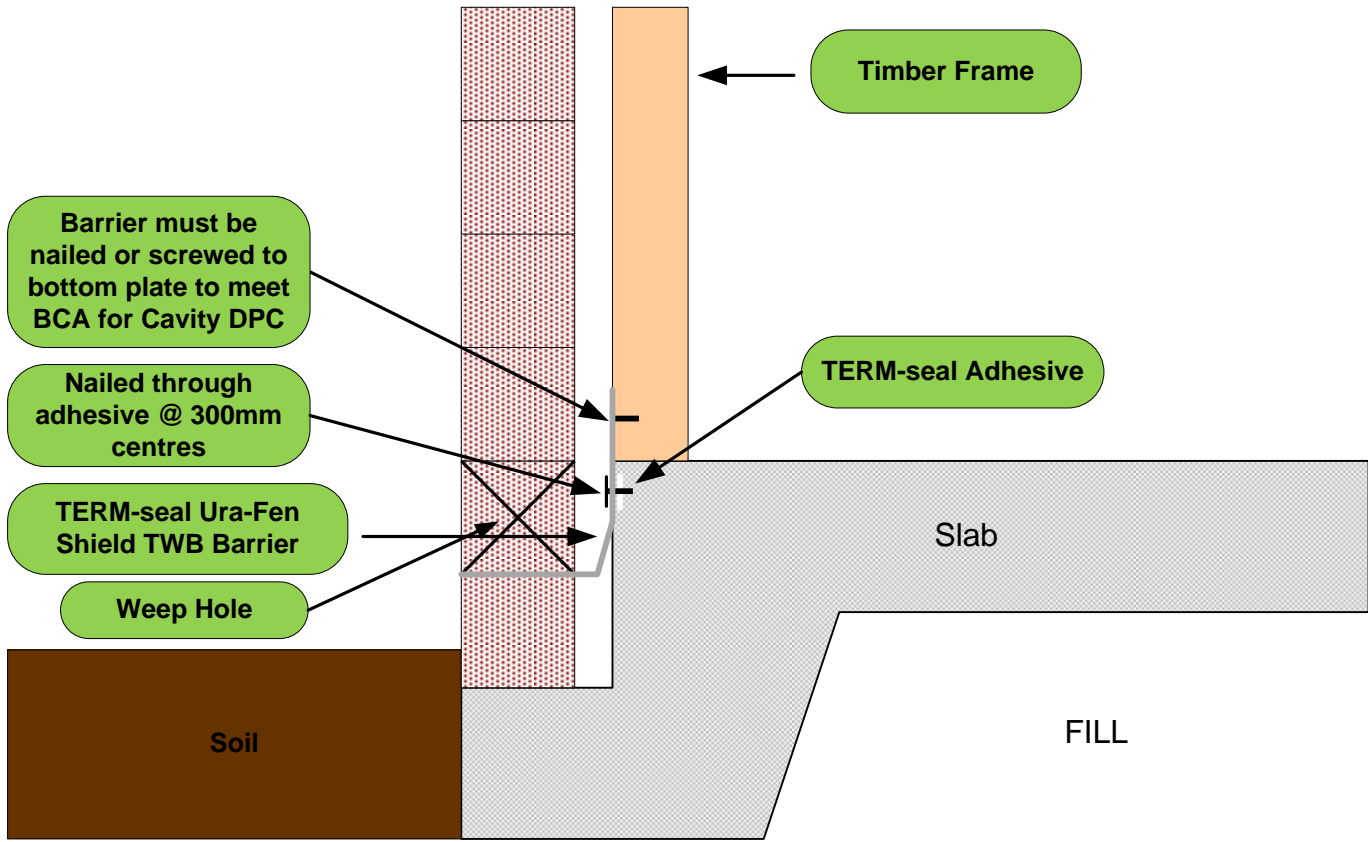


**Side-Loaded TERM-seal Ura-Fen Shield TWB
Installed as a Dampcourse on First course stepdown to meet AS3660.1**



TERM-seal (Aust) Pty Ltd
P.O. Box 107
Port Melbourne 3207
Ph: 0800 697 822
Info: 0800 697 822
Drawings: 01.2/14/2012