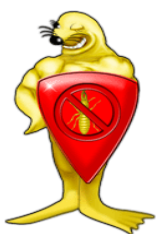
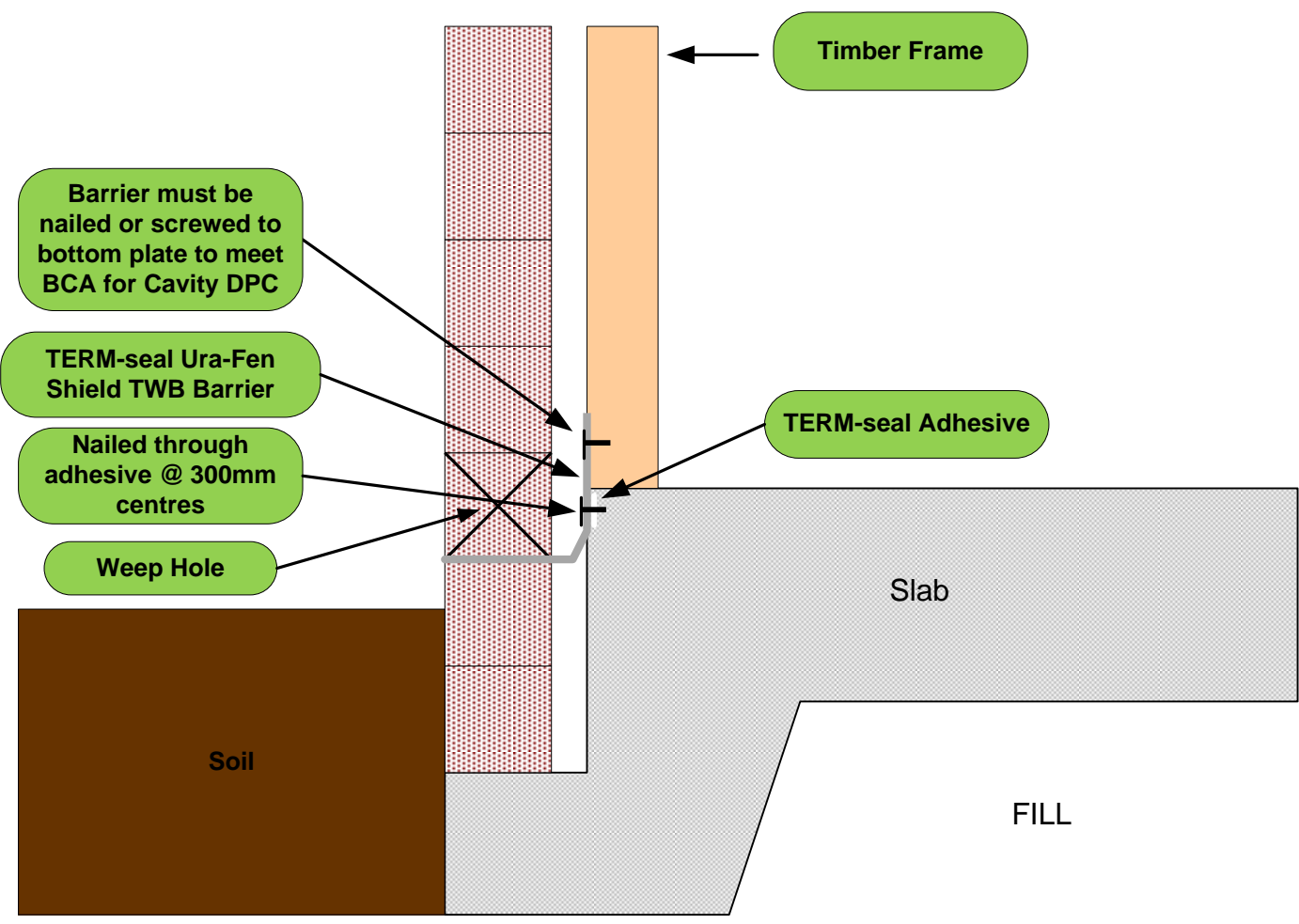


**Side-Loaded TERM-seal Ura-Fen Shield TWB
Installed as a Dampcourse on Second course stepdown to meet AS3660.1**



TERM-seal Aust P/L

TERM-seal (Aust) Pty Ltd
P.O. Box 101
Russett Road 101
Ph: 0800 001 002
Info@term-seal.com.au
Drawings: 04. 2/14 /2012